

Sutter Health Institute for Advancing Health Equity

Hospital Association of Southern California

March 4, 2021



Maria R. Moreno, MPH
Program Manager

Key Takeaways

Building Your Health Equity Playbook

1. Identifying and Tracking Key Metrics
2. Establishing System Support
3. Promoting Shared Accountability
4. Engaging Community Stakeholders

What is Health Equity?



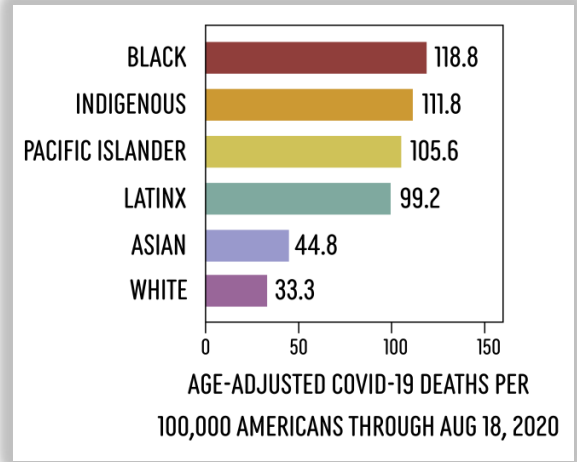
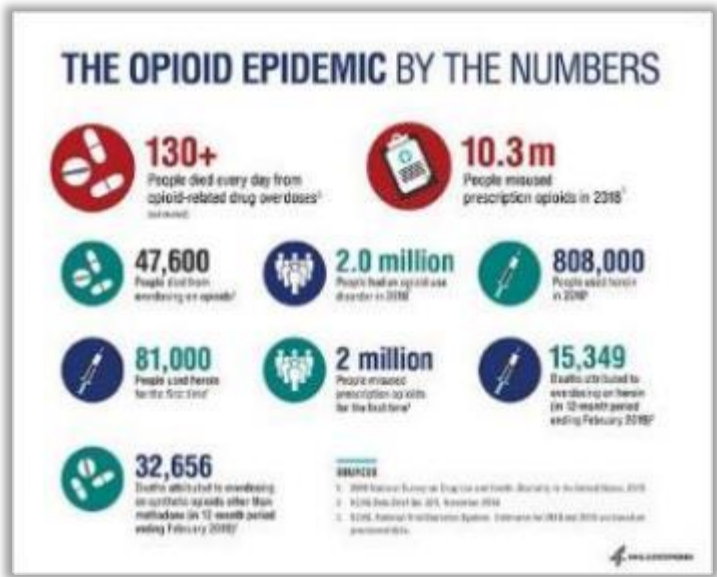
This moment calls for urgent action

With the unprecedented events the world is facing today, the need for equitable healthcare is a critical public health matter that needs to be urgently addressed.

Institute for Health Metrics and Evaluation @IHME_UW · Jun 6
 Racism and discrimination are critical public health issues that demand an urgent response. #BlackLivesMatter

Read our director's statement: healthdata.org/about/racism-p...

RACISM IS A PUBLIC HEALTH ISSUE.



The New York Times

THE CHECKUP

The Impact of Disparities on Children's Health

Differences in access to medical care and treatment contribute to conditions that disproportionately hurt minority children.

American Heart Association

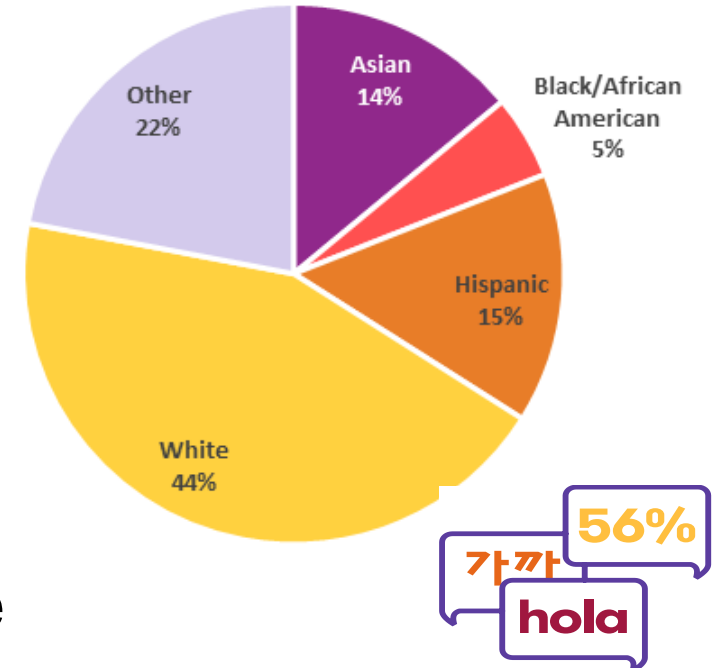
Call to Action: Structural Racism as a Fundamental Driver of Health Disparities

A Presidential Advisory from the American Heart Association

Why it Matters | Sutter Health Diversity

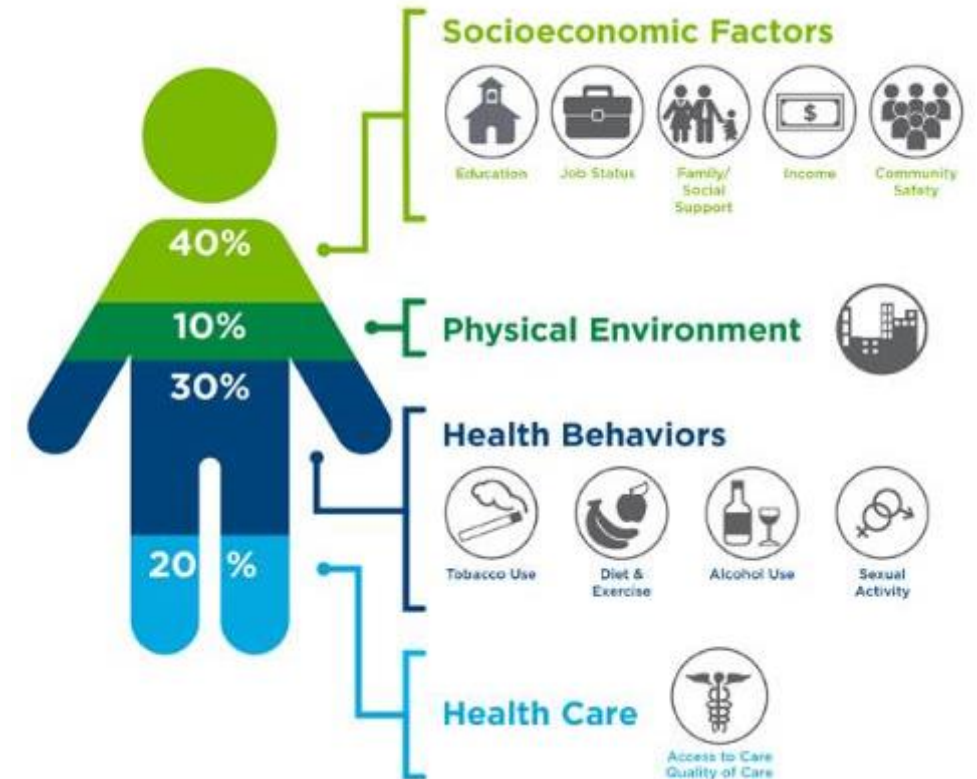
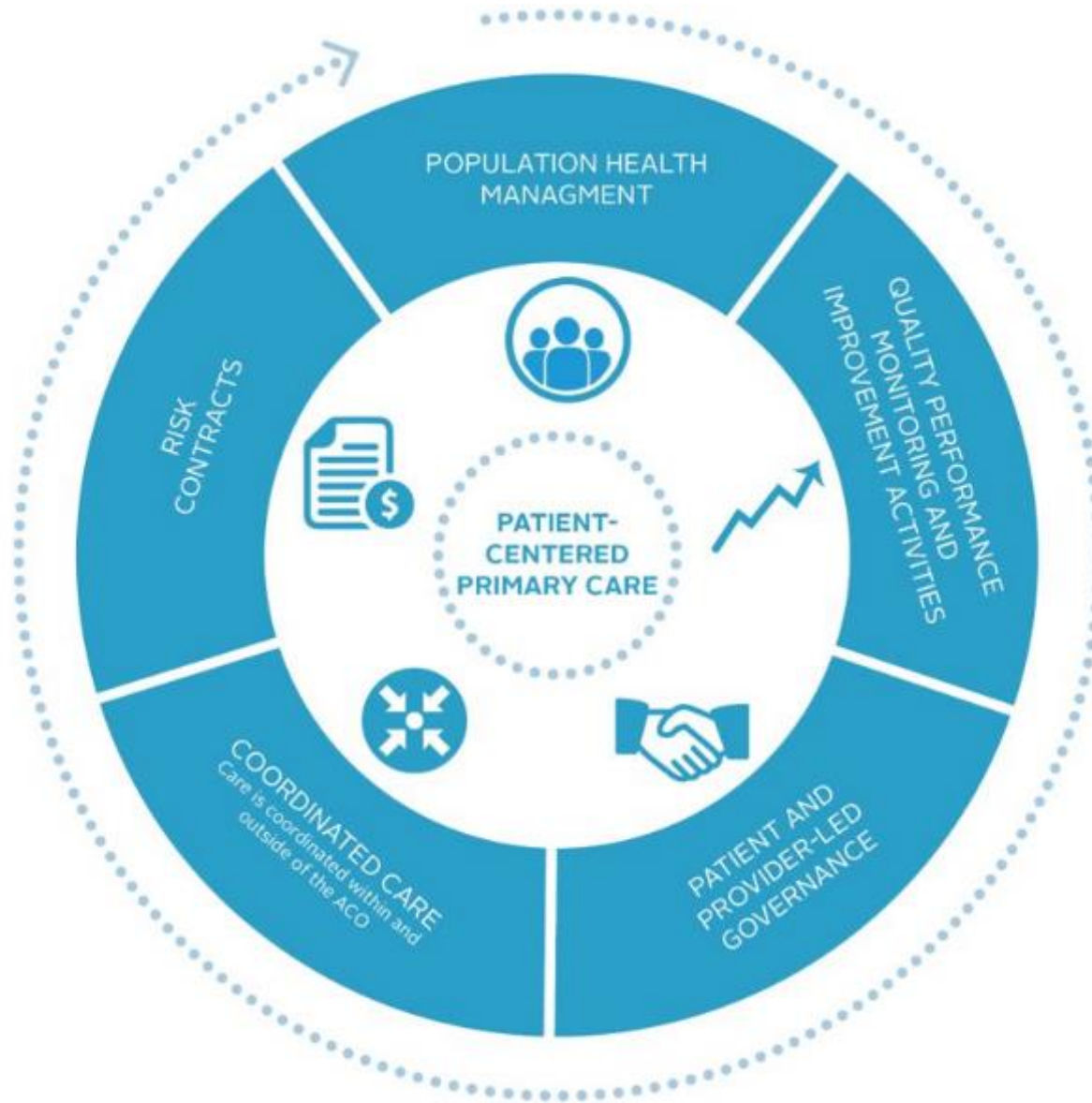


- 22 NorCal counties
- rural – urban – suburban
- 56% of **patients** and almost 50% of **staff** identify as non-White
- 10% Non-English primary language



Why it matters | Achieving Health Equity as an Integral part of Quality

Health Equity is needed to support future business directions – Health plan expansion, VBC



Institute Overview

Our Focus in Advancing Health Equity

- Socioeconomic
- Race/ethnic
- LGBTQ
- Age-related
- Abilities

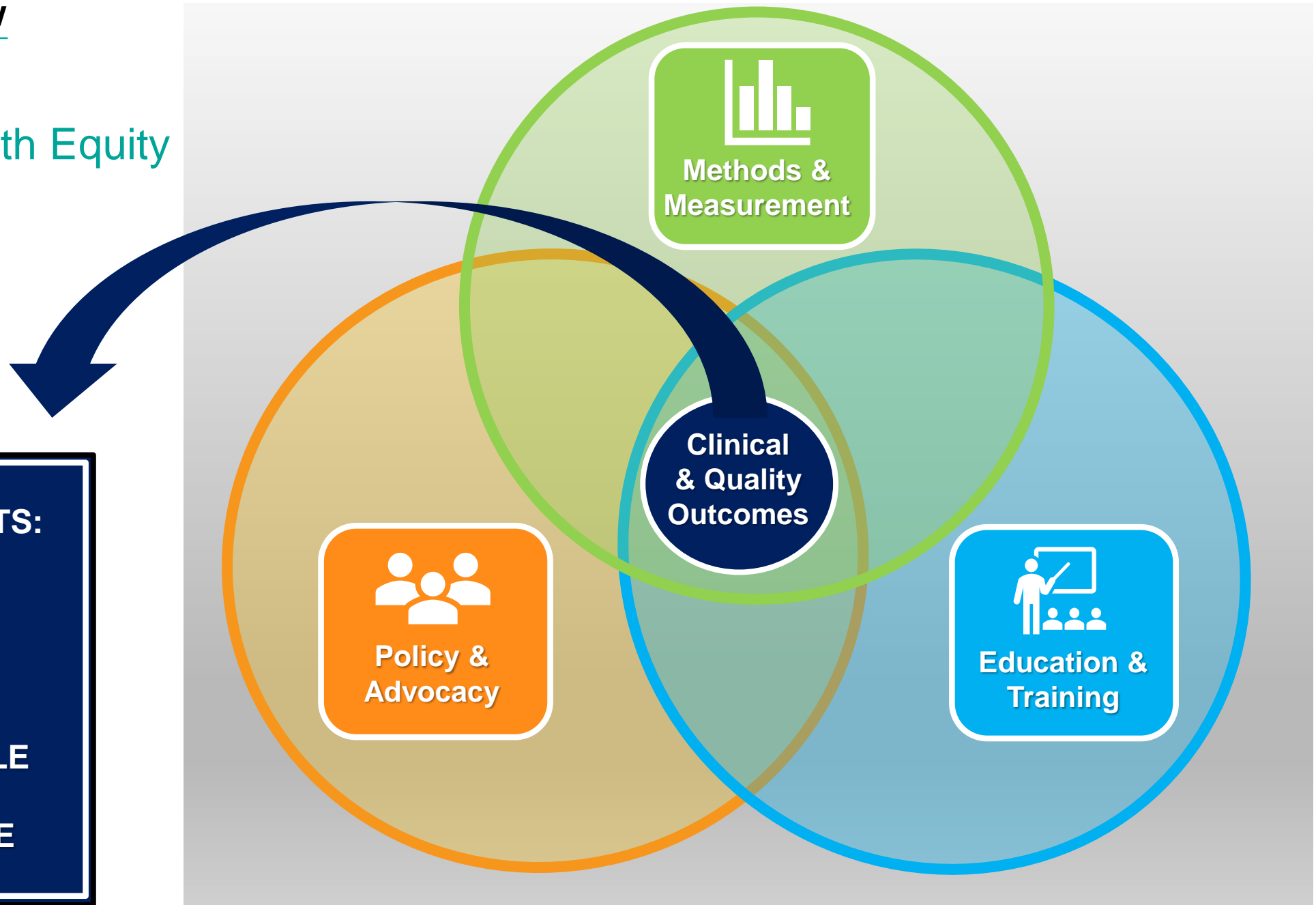
KEY RESULTS:

SAFE

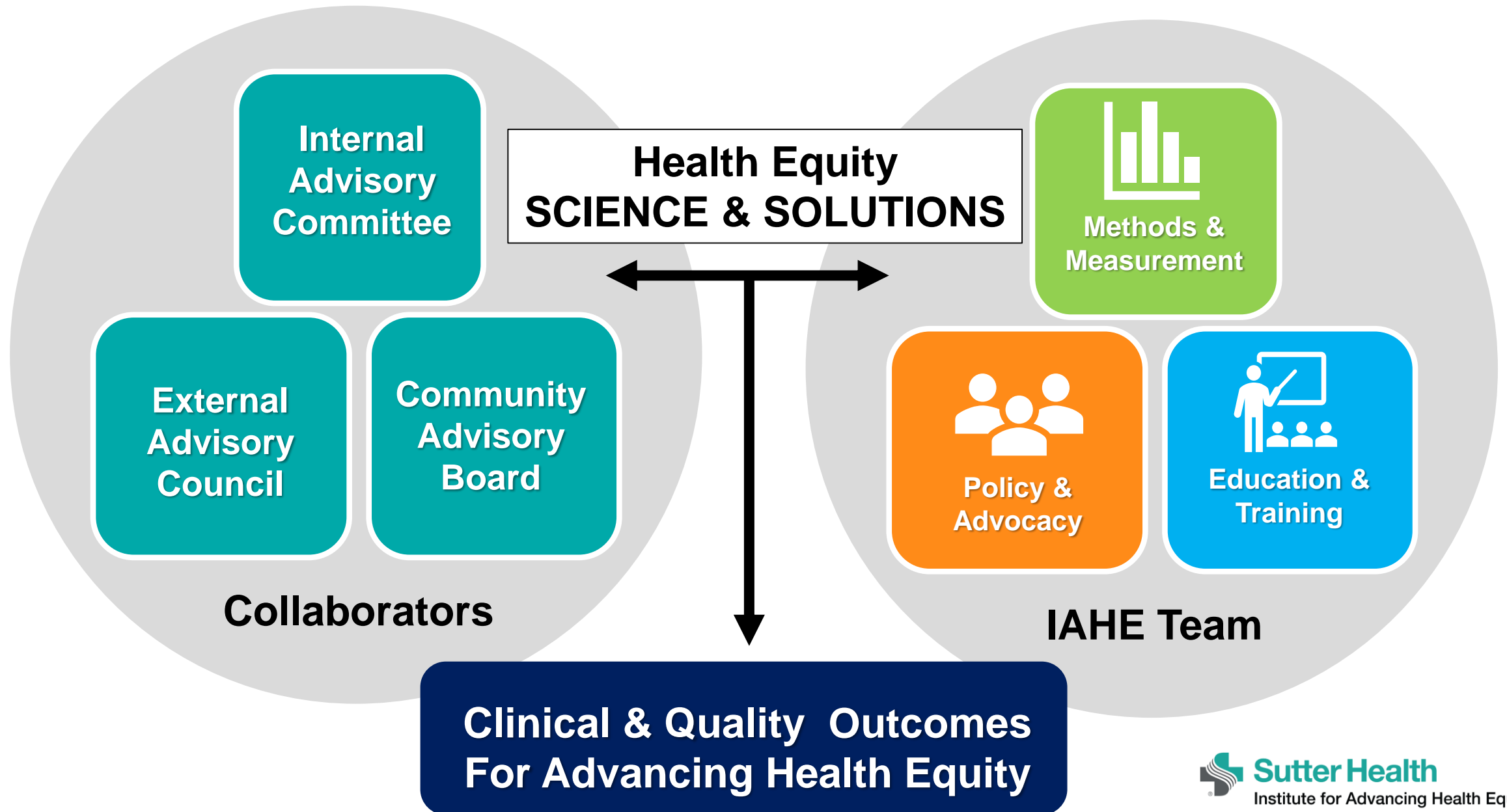
PERSONAL

AFFORDABLE

ACCESSIBLE



What we need | Involvement from our Internal Advisory Committee



Success Requires Teamwork and Collaboration

We need to collaborate with others both internally and externally, listening carefully, doing things reflective of best practices, and using our data to prioritize and design interventions.



- INTERNAL ADVISORY COMMITTEE
- Sutter Health leaders and IAHE stakeholders
 - Support organizational collaboration and synergy
 - Provide IAHE oversight and guidance

- EXTERNAL ADVISORY COMMITTEE
- Public health leaders (local and national)
 - Community-based organizations and partners
 - Provide expertise and community engagement
 - Assure IAHE program goals are relevant and nationally significant

Our journey so far...

On a mission to advance health equity

ASTHMA PROGRAM IN ALAMEDA COUNTY



Legend
FGHC Clinic
Alameda County Health Services Department

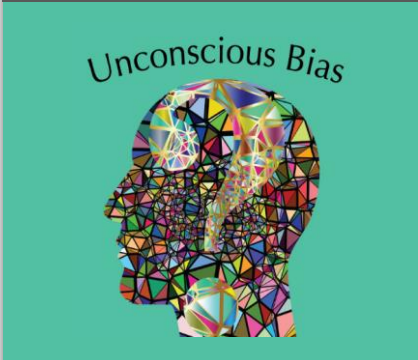
Asthma is best managed in a primary care setting...not the ED.




COVID-19 COMMUNITY TESTING



UNCONSCIOUS BIAS



Having a baby is a joyful experience, unless bias gets in the way.



MATERNAL HEALTH



Sutter Health
Committed to Improving Health Outcomes for Black Mothers



POLICY & ADVOCACY



Sutter Health Institute for Advancing Health Equity

Discussion and Questions