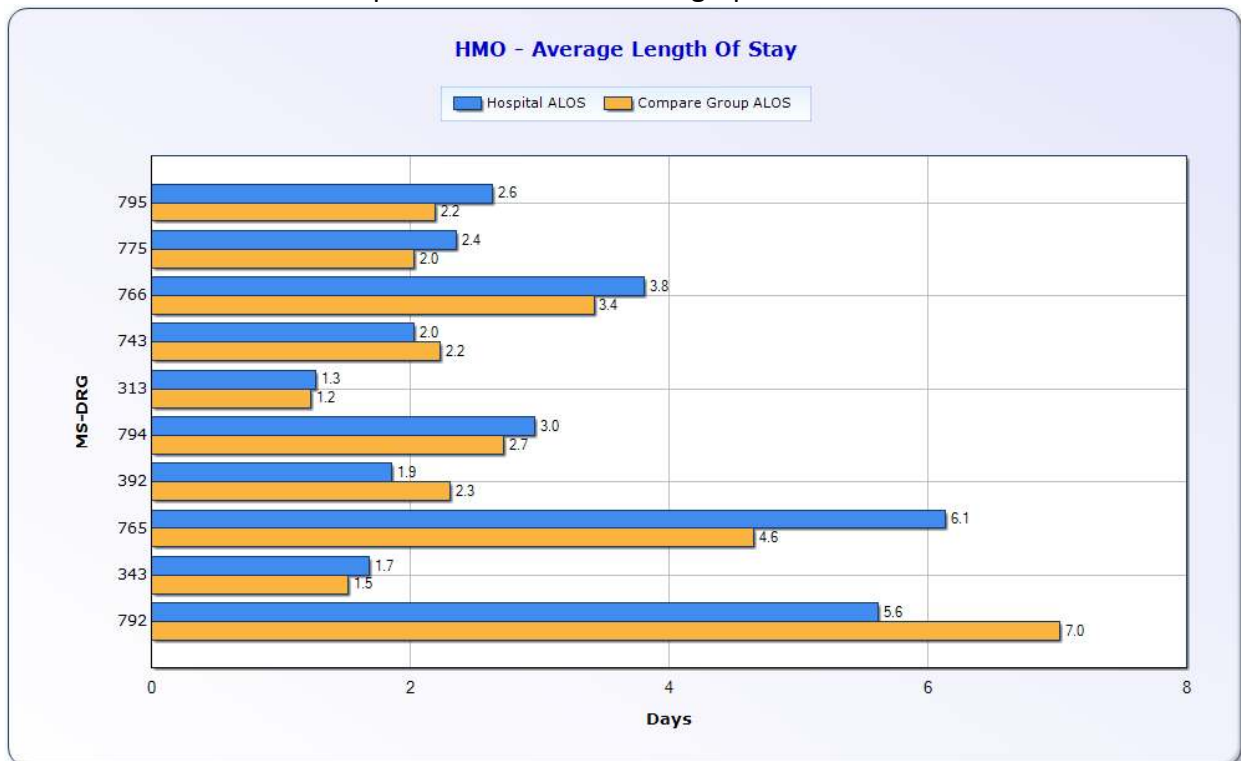


Coming This Month: Executive Dashboards

- 11 mission-critical market data graphs at the click of the mouse
- Quickly compare HMO to HMO, PPO to PPO, and Medicare to Medicare for your top 10 MS-DRGs
- Instantly view Payer Mix Comparison
- Immediately view your Managed Care Comparison and Trended Reimbursement against your peer group

HMO to HMO Comparison, PPO to PPO Comparison, and Medicare to Medicare Comparison:

This section of the new hospital dashboards will allow you to quickly view how your average HMO, PPO, or Medicare LOS and Reimbursement for your top 10 MS-DRGs compares to your self-selected peer group average HMO, PPO or Medicare LOS and Reimbursement for the same MS-DRGs. Below is an example of the HMO to HMO graphs:



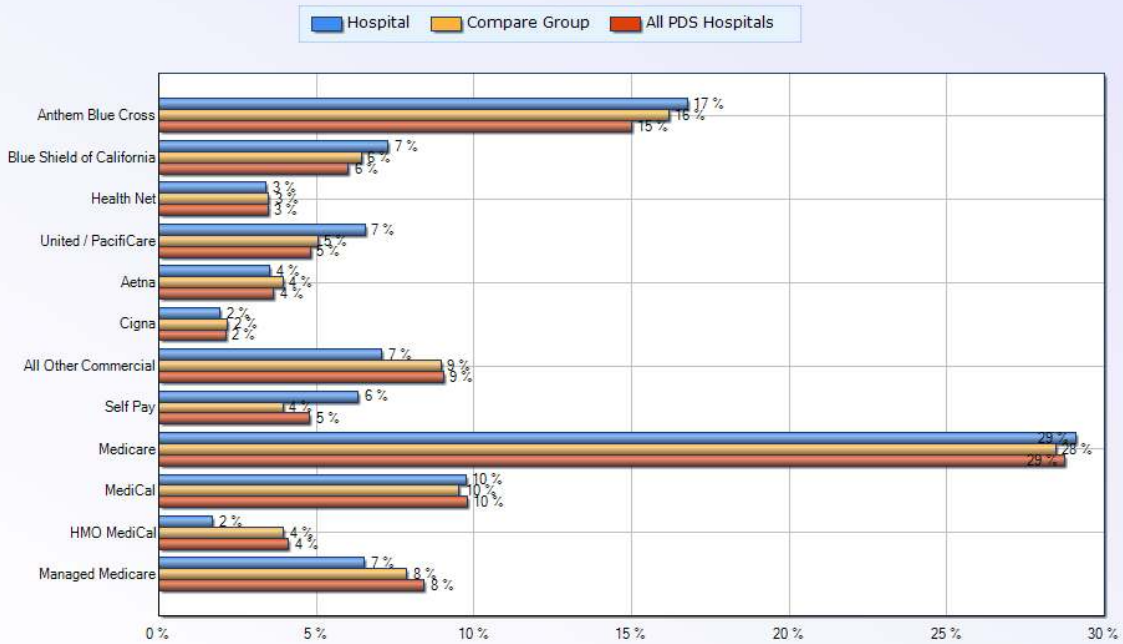
HMO – Average Reimbursement/case

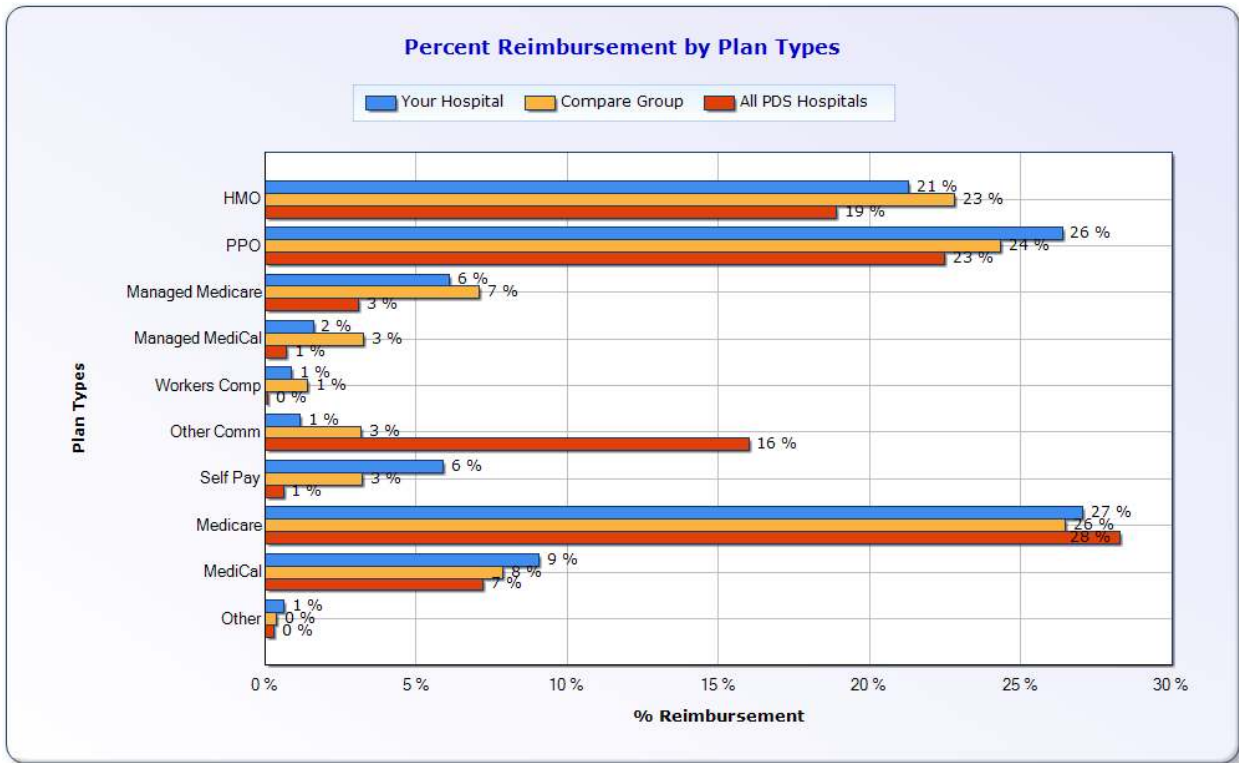


Payer Mix Comparison:

This section of the new hospital dashboards will allow you to quickly view how your Payer Mix by Major Payer and Payer Mix by Plan Type compare to your self-selected peer group payer mix, as well as to the entire PDS community of hospitals.

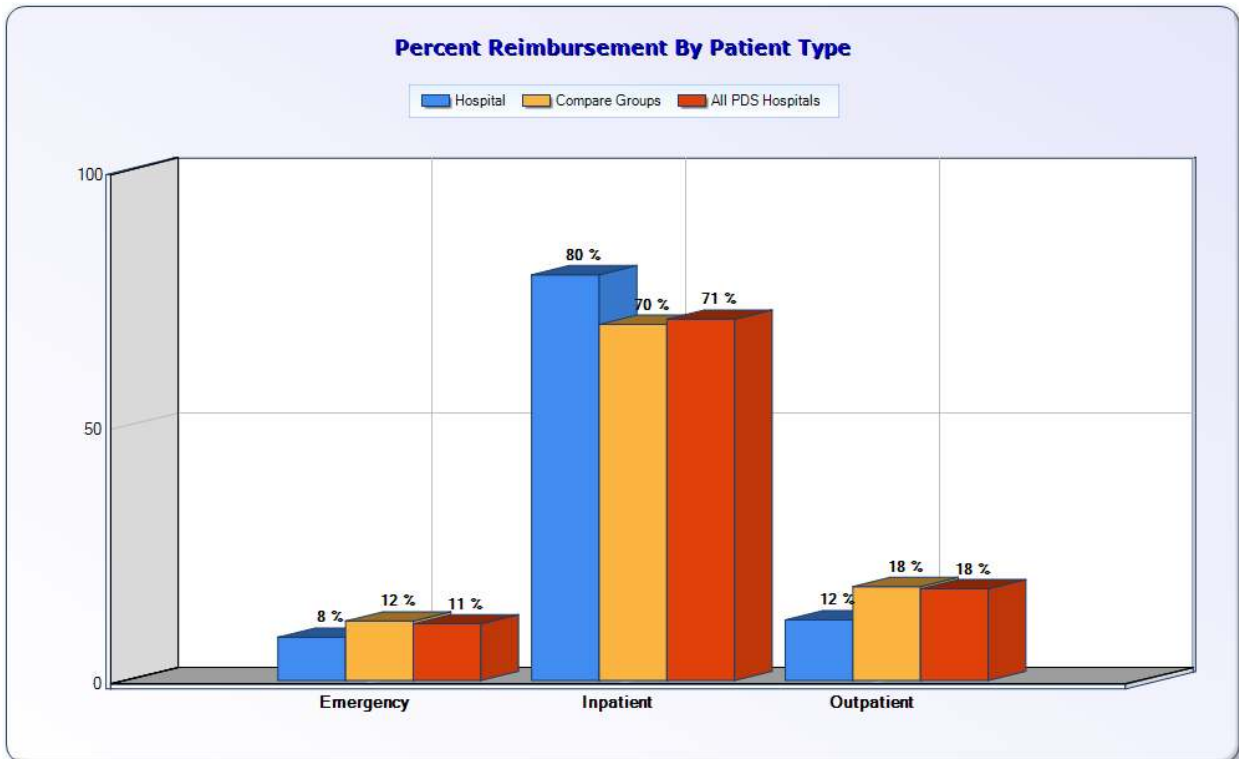
Percent Reimbursement by Payer





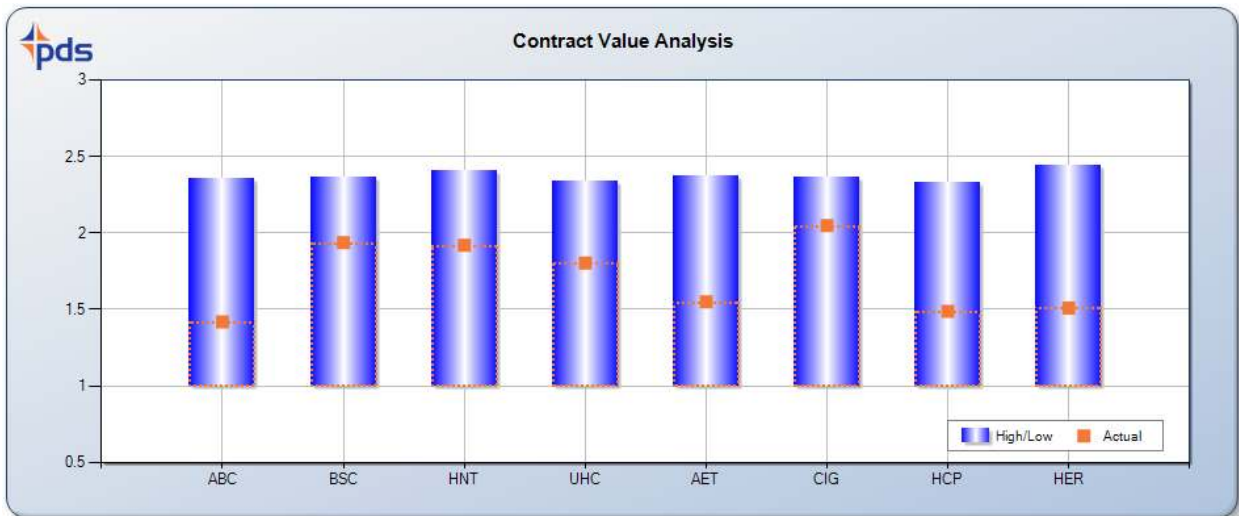
Patient Mix Comparison:

This section of the new hospital dashboards will allow you to quickly view how your Patient Mix compares to your self-selected peer group payer mix, as well as to the entire PDS community of hospitals.



Managed Care Comparison:

View how your payer contract compares to the average rate of the six major payers for the hospitals in your peer group.



Trended Reimbursement Comparison:

View how your contract revenue for the six major payers compares to your peer group over time.



For the first time, you will have access to a clear picture of how your hospital is performing relative to your peer group for many critical indicators, all in one convenient place. This market analysis will allow you to make calculated and informed decisions regarding contract negotiation, business development, and strategic planning.

Revenue Management and Market Analysis